

Concreto.

design Fabio Novembre



LEA
CERAMICHE

Concreto.

design Fabio Novembre

LEA

CERAMICHE



01.

**La rappresentazione
inedita di un materiale
d'architettura.**

**The original
representation of a
material for architecture.**



Introduction.

Concreto, l'organicità del cemento incontra la tecnologia del gres porcellanato laminato, dando vita a superfici inedite, sorprendenti, emozionanti. Una collezione innovativa e ricercata, in grado di adattarsi ad ogni contesto architettonico e stilistico, per spazi originali e dal forte valore narrativo.

Concreto, the organic structure of cement meets the technology of laminated porcelain stoneware, thus creating original, surprising and appealing surfaces. An innovative and refined collection that can be adapted to any architectural and design context, for unique spaces with a strong narrative value.

01a.

Fabio Novembre nasce a Lecce nel 1966. Nel 1984 si trasferisce a Milano dove si laurea in Architettura al Politecnico. Nel 1992 si sposta a New York dove frequenta un corso di regia cinematografica presso la New York University. Nel 1994 torna a Milano e apre il suo studio. Progetta architettura e interni per i più importanti brand internazionali. Collabora con le più grandi aziende italiane di design.

Fabio Novembre was born in Lecce in 1966. In 1984 he went to Milan, where he graduated in architecture at the Politecnico. In 1992 he moved to New York, where he studied filmmaking at the New York University. In 1994 he returned to Milan and established his studio. He has designed works of architecture and interior for the most important international brands and has collaborated with the most renown Italian design companies.



Fabio Novembre.

“Con Lea Ceramiche esiste un rapporto lavorativo che va avanti da anni con rispetto e reciproca ammirazione. Era quasi prevedibile che tutto evolvesse in qualcosa di più... Concreto. Abbiamo collaborato fianco a fianco con i loro tecnici per tirare fuori il miglior risultato. Ne è nata una collezione ampia che gioca tantissimo sul contrasto tra lucido e opaco, in cui anche i decori, tono su tono, non sono mai urlati. Per questa collezione l'acqua è uno spunto di partenza meraviglioso perché è una componente essenziale di quello che noi chiamiamo cemento, quindi la maniera in cui l'acqua reagisce naturalmente, organicamente con il cemento è diventato il pattern decorativo che ho proposto a Lea Ceramiche, la squadra perfetta in cui performare”

“We started working together with Lea Ceramiche many years ago and this has brought about a relationship of mutual respect and esteem. It was inevitable that it would have led to something more... Concreto. We have worked side by side with their research team to reap the best of this reciprocal appreciation. We created a broad collection that plays effectively with the shiny and matt contrast, in which the tone-on-tone decorations are never too loud. The inspiration for this collection is water which is an essential component of what we call cement. The way water naturally and organically reacts with cement turned into the decorative pattern that I proposed to Lea Ceramiche, and it turned out to be the perfect team to work with”

02.

**Cinque declinazioni
cromatiche / Five color
shades.**

Colori / Colors

- 01. Concreto Extra Light
- 02. Concreto Light
- 03. Concreto Medium
- 04. Concreto Dark
- 05. Concreto Rust

Materiale / Material
Gres porcellanato
laminato/Laminated
porcelain stoneware
6mm

Formati / Sizes

- 60x120cm 24"x48"
- 120x120cm 48"x48"
- 120x260cm 48"x102"

Colors.



02a.

Varianti / Variations

01. Foam
02. Tide
03. Dry
04. Reef

Materiale / Material

Gres porcellanato
laminato/Laminated
porcelain stoneware
6mm

Formati / Sizes

120x120cm 48"x48"
120x260cm 48"x102"

Foam, Tide, Dry e Reef.

La miscela cementizia con i suoi flussi solidificati, la sua porosità e le sue irregolarità variano a seconda dell'azione dell'acqua, dell'aria e della forza di gravità.

Foam, Tide, Dry and Reef.

The cement-based mixture with its solidified flows, its porosity and its unevenness varies based on the action of water, air and gravity.

Variations.



02b.

Decori / Decors

01. Drops Gold Medium
02. Drops Gold Extra Light
03. Drops Gold Dark
04. Drops Gold Light
05. Drops Gold Rust

Materiale / Material

Gres porcellanato
laminato/Laminated
porcelain stoneware
6mm

Formati / Sizes

60x120cm 24"x48"
120x120cm 48"x48"
120x260cm 48"x102"

Drops, la materia stessa diventa decoro, creando possibilità estetiche uniche, interpretando molteplici abbinamenti fra texture e cromatismi, trasformando ogni spazio in un'emozione unica.

Drops, matter becomes decor and creates unique aesthetical solutions. It recreates multiple combinations between textures and colors, thus transforming space into a unique emotion.

Decors.





03. The Collection.

03a.

Extra Light and Medium.





WALL
Concrete Medium 120x260
Concrete Extra Light 120x260

FLOOR
Concrete Extra Light 120x120



Concreto Extra Light



Lea Ceramiche

WALL
Concreto Extra Light 120x260
Concreto Medium 120x260

FLOOR
Concreto Extra Light 120x120



Concrete Extra Light 120x260

Lea Ceramiche



L'interpretazione personale dell'habitat domestico. Raffinate texture materiche, fanno da cornice a uno scenario composto di pochi, semplici elementi. Superfici, arredi, oggetti scelti e abbinati con cura, per creare una sapiente armonia fra volumi, colori, vuoti e pieni.

The personal interpretation of home. Refined material textures frame a scenery that is made up of a few simple elements. Surfaces, furniture, items that were thoroughly selected and combined to harmoniously combine elements, colours, solids and voids.

03b.

FLOOR Concrete Light 120x120
WALL Drops Gold Medium 120x260

Light and Medium.





WALL
Drops Gold Medium 120x260

FLOOR
Concrete Light 120x120



Un moderno convivio, con un mood raffinato. Ombre che proiettano segni grafici sulle superfici, forme sinuose che disegnano un ambiente accogliente ed elegante allo stesso tempo. Uno spazio intimo che esprime uno stile di vita elevato, in ogni minimo dettaglio.

Modern harmony with a sophisticated mood. Shadows projecting graphics on the surfaces, meandering forms designing a cosy, yet elegant space. An intimate environment that highlights a high-end lifestyle, starting from the slightest of details.



03c.

Dark and Light.





Immersione totale nel benessere.
Sensazioni materiche profonde
che avvolgono il corpo e la mente,
memorie ancestrali e design
contemporaneo. Il piacere di
ritrovare il contatto con sè stessi
e con gli elementi della natura,
alla luce di una moderna cultura
dell'abitare e del vivere.

Total immersion in wellness.
Deep material feelings that
wrap both the body and the
mind, ancestral memories and
contemporary design. The pleasure
to be in touch with oneself and
with the elements of nature, always
bearing in mind a modern culture of
dwelling and living.

WALL
Reef Dark 120x260
Concreteo Light 60x120

FLOOR
Concreteo Dark 120x120

Concreto Light 60x120



Lea Ceramiche

Concreto Dark 120x120



03d.

Classicità e contemporaneità si incontrano. Memoria e attualità, arte e artigianato, design e tecnologia, in un mix eclettico ed equilibrato che crea un'atmosfera speciale. Su tutto aleggia un senso di sartorialità, autenticità e bellezza che trascende ogni definizione.

Classical and contemporary looks combined. Memory and modernity, arts and crafts, design and technology, all in an eclectic and balanced combination create a special atmosphere. Everything is wrapped by a sense of made-to-measure, authenticity and beauty, which transcends any definition.

Dark and Medium.





RECEPTION DESK
Concrete Rust

WALL
Foam Medium 120x260
Dry Dark 120x260

FLOOR
Concrete Medium 120x260



WALL
Foam Medium 120x260

FLOOR
Concrete Medium 120x260









03e.

Rust and Medium.





Lea Ceramiche

Il piacere di andare oltre i luoghi comuni. Citazioni industriali e design minimale, per uno spazio capace di stupire, attrarre, coinvolgere in tutti i sensi. Un'esperienza materica e formale creata su misura per gli spiriti più raffinati, in grado di cogliere ogni sfumatura del progetto.

The pleasure to go beyond the mundane. Industrial references and minimal design for a space that can astonish, attract and engage in every way. A bespoke tangible and distinct experience for the most refined crowd, who can fully understand every little detail of the project.

COUNTER
Concrete Rust

WALL
Concrete Rust 120x260

FLOOR
Tide Medium 120x260



Concrete Rust

Lea Ceramiche



Tide Medium 120x260



COUNTER
Concrete Rust

WALL
Concrete Rust 120x260

FLOOR
Tide Medium 120x260





Tide Medium

04.

Info.

Colori / Colors

Concreto Extra Light

Concreto Light



Concreto Medium

Concreto Dark

Concreto Rust



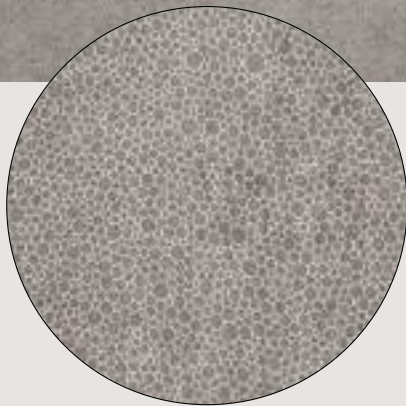
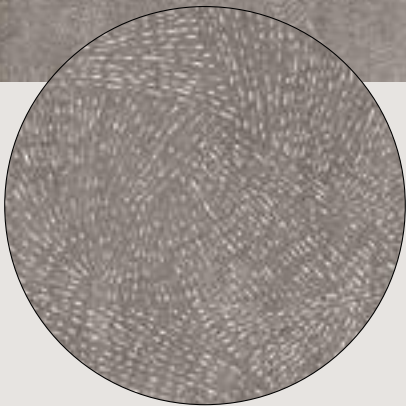
Varianti / Variations

Tide

Foam

Concreto Medium

Concreto Medium

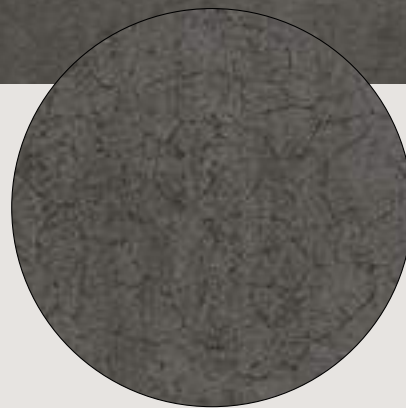
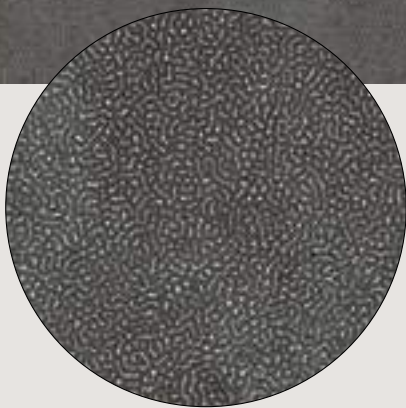


Reef

Dry

Concreto Dark

Concreto Dark



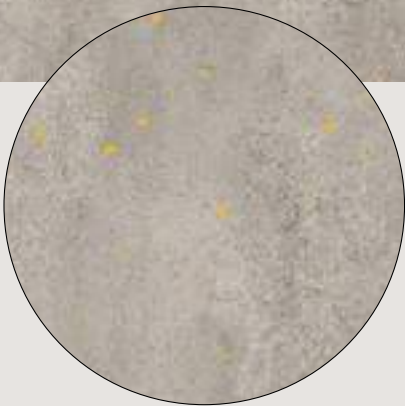
Decori / Decors

Drops Gold

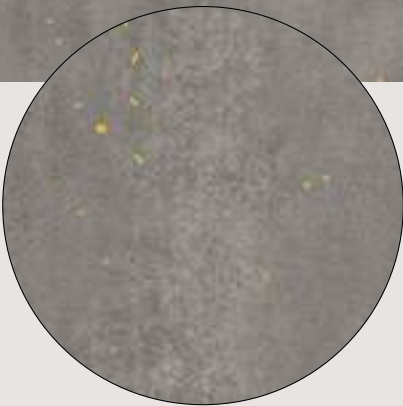
Concreto Extra Light



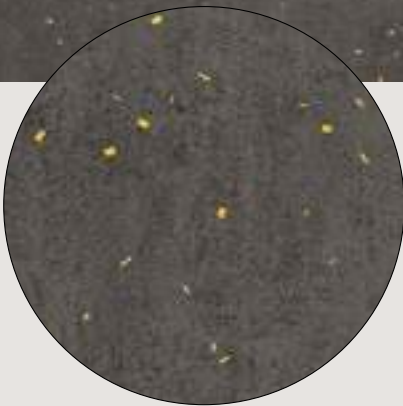
Concreto Light



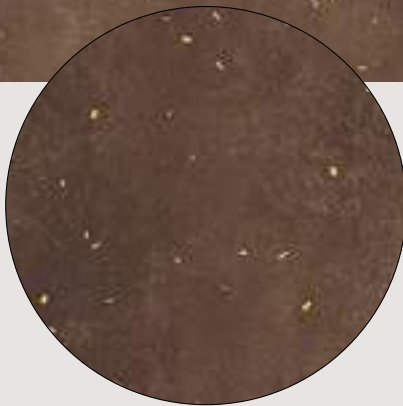
Concreto Medium



Concreto Dark



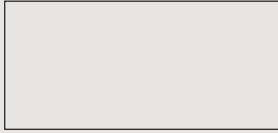
Concreto Rust



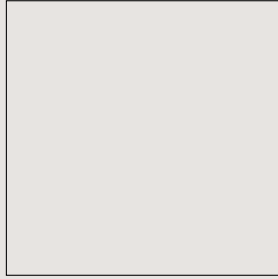
Formati / Sizes ^{LR¹}

Gres porcellanato laminato
/Laminated porcelain stoneware
Spessore/thickness: 6mm

 LIMTECH



60x120cm
24"x48"



120x120cm
48"x48"



120x260cm
48"x102"

Decori / Decors

Drops Gold

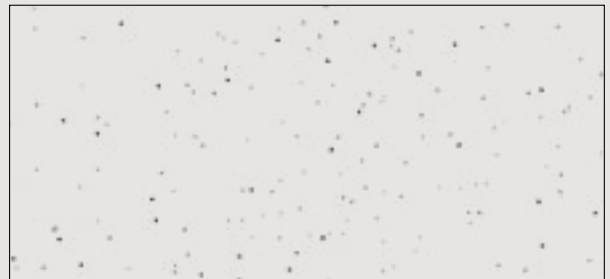
Concreto Extra Light
Concreto Light
Concreto Medium
Concreto Dark
Concreto Rust



60x120cm
24"x48"



120x120cm
48"x48"

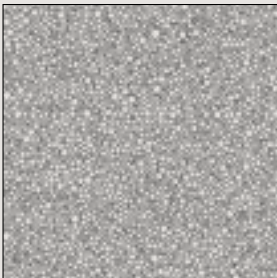


120x260cm
48"x102"

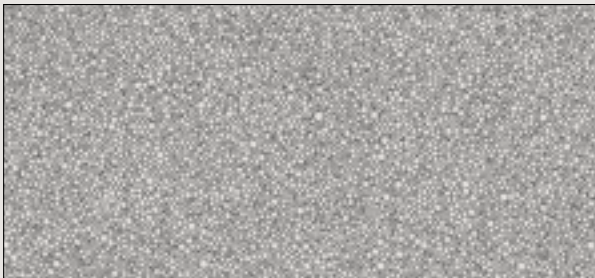
Varianti / Variations

Foam

Concreto Medium



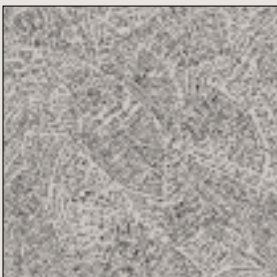
120x120cm
48"x48"



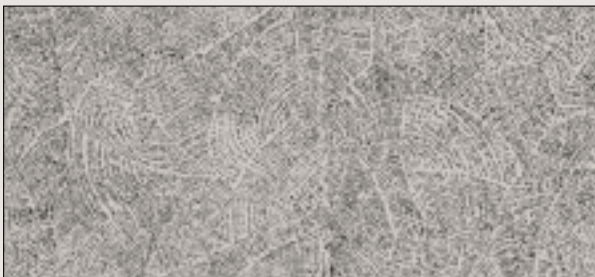
120x260cm
48"x102"

Tide

Concreto Medium



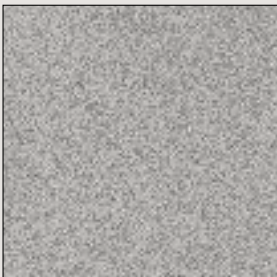
120x120cm
48"x48"



120x260cm
48"x102"

Reef

Concreto Dark



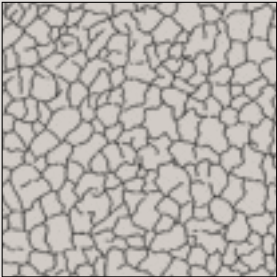
120x120cm
48"x48"



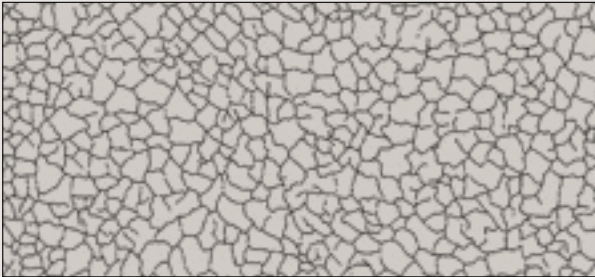
120x260cm
48"x102"

Dry

Concreto Dark





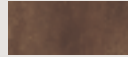


120x120cm
48"x48"



120x260cm
48"x102"

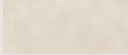
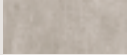
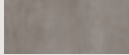
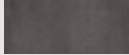
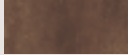
Fondi / Plain tiles

	Concreto Extra Light	Concreto Light	Concreto Medium	Concreto Dark	Concreto Rust
					
120x260cm 48"x102"	LS6CN10	LS6CN20	LS6CN30	LS6CN00	LS6CN40

120x120cm 48"x48"	LS8CN10	LS8CN20	LS8CN30	LS8CN00	LS8CN40
----------------------	---------	---------	---------	---------	---------

60x120cm 24"x48"	LSXCN10	LSXCN20	LSXCN30	LSXCN00	LSXCN40
---------------------	---------	---------	---------	---------	---------

Varianti / Variations

		Concreto Extra Light	Concreto Light	Concreto Medium	Concreto Dark	Concreto Rust
						
Dry	120x260cm 48"x102"	—	—	—	LS6CND0	—
	120x120cm 48"x48"	—	—	—	LS8CND0	—
Foam	120x260cm 48"x102"	—	—	LS6CNF0	—	—
	120x120cm 48"x48"	—	—	LS8CNF3	—	—
Tide	120x260cm 48"x102"	—	—	LS6CNT0	—	—
	120x120cm 48"x48"	—	—	LS8CNT3	—	—
Reef	120x260cm 48"x102"	—	—	—	LS6CNR0	—
	120x120cm 48"x48"	—	—	—	LS8CNR0	—

Decori / Decors

		Concreto Extra Light	Concreto Light	Concreto Medium	Concreto Dark	Concreto Rust
						
Drops gold	120x260cm 48"x102"	LS6CNG1	LS6CNG2	LS6CNG3	LS6CNG0	LS6CNG4
	120x120cm 48"x48"	LS8CNG1	LS8CNG2	LS8CNG3	LS8CNG0	LS8CNG4
	60x120cm 48"x102"	LSXCNG1	LSXCNG2	LSXCNG3	LSXCNG0	LSXCNG4

()



P R () T E C T

L'esclusiva tecnologia Panariagroup per pavimenti e rivestimenti antibatterici ad altissime performance. Per un abitare sano, sicuro e protetto.

The exclusive Panariagroup technology for antimicrobial floor and wall coverings with the highest performance. To live healthy, safe and secure.



Azione potente.

Elimina i batteri e ne impedisce la proliferazione

Powerful action.

Eliminates microbes and prevents their reproduction



Efficacia eterna.

Grazie alla tecnologia integrata in modo permanente nel prodotto

Eternal effectiveness.

Thanks to the technology permanently integrated into the product



Protezione continua.

Sempre attivo, 24 ore su 24, con e senza luce solare

Continuous protection.

Always active, 24 hours a day, with and without sunlight



Qualità garantita

dalla partnership

CON MICROBAN[®]

Guaranteed quality

by the partnership

with MICROBAN[®]

PANARIAgroup

www.protect.panariagroup.it

Gres porcellanato laminato in grande formato:
un materiale leggero, versatile e resistente
per nuove prospettive progettuali nel mondo
dell'architettura.

Large-sized laminated porcelain stoneware:
a light, resistant and versatile product for new
design perspectives in the world of architecture
and housing.

1. Massimi standard
qualitativi e prestazionali.
Grazie all'utilizzo di materie
prime pregiate

Highest standards of quality
and performance.
Thanks to the use of the
best raw materials

2. Lastre supercompatte
ed elastiche.
Grazie a un processo di
pressatura unico

Highly compact
and elastic slabs.
Thanks to a unique pressing
process

3. Eccellente resa estetica
dei materiali.
Grazie alle tecniche
esclusive di lavorazione
delle superfici

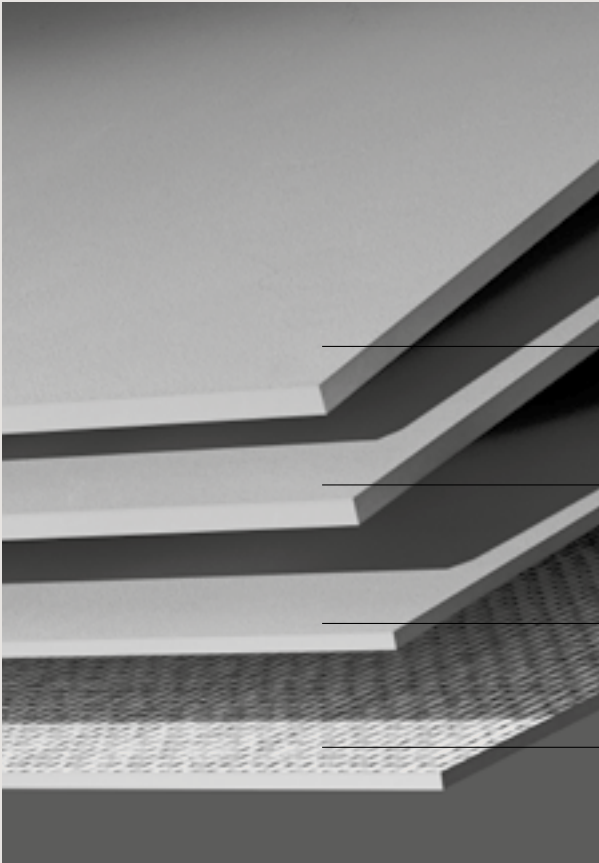
Excellent aesthetic look of
the products.
Thanks to exclusive surface
treatment technologies





4. Straordinaria
extra-resistenza.
Grazie alla fibra di vetro
di rinforzo

Highly resistant.
Thanks to the reinforced
glass fiber mesh

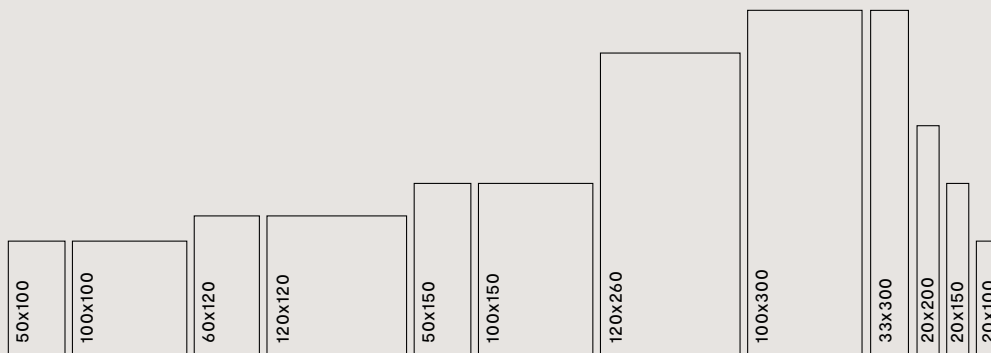
5. Alta sostenibilità
ambientale.
Meno materie prime
utilizzate, minor consumo
di acqua ed energia, minori
emissioni di CO²

Highly Eco-friendly.
Less raw materials used,
lower water and
energy consumption
and lower CO² emissions

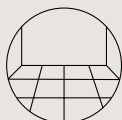


6mm	 SLIMTECH	Sottile e resistente.	Thin and resistant.
5.5mm	 SLIMTECH	Ultrasottile e ultrasensibile. Con fibra di vetro.	Ultra-thin and ultra-resistant. With fibreglass mesh.
3.5mm	 SLIMTECH	Ultrasottile e ultrasensibile. Con fibra di vetro.	Ultra-thin and ultra-resistant. With fibreglass mesh.
		Rinforzo con fibra di vetro.	Reinforced with fibreglass mesh.

Formati / Sizes (cm)



Destinazioni d'uso / Intended uses



Posa a pavimento Floor installation

Situazioni applicative sia per interventi di nuova costruzione che di ristrutturazioni con posa in sovrapposizione a pavimenti preesistenti.

IN INTERNO

Residenziale (cucine, bagni, living, aree comuni condominiali, ed ogni altro ambiente di uso residenziale)

Commerciale leggero (uffici, uffici aperti al pubblico, sale d'attesa, negozi, bagni, sale di ristoranti, autosaloni, bar, cinema, ambulatori, cliniche)

Commerciale intensivo (aree comuni di centri commerciali, hall di alberghi, mense, fast food, discoteche, ospedali.)
Ad esclusione di zone sottoposte al passaggio di carichi pesanti concentrati (ad es. carrelli a ruote dure)

IN ESTERNO

A condizione che le superfici siano coperte (es. logge, balconi coperti, ecc.) e perfettamente impermeabilizzate. Si consiglia l'utilizzo di formati con lati non superiori a 120cm.

For new buildings and refurbishing, for installation on pre-existing floors.

INTERIORS

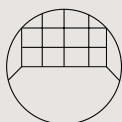
Residential (kitchens, bathrooms, living rooms, common apartment block areas and any other residential environment)

Light Commercial (offices, offices open to the general public, waiting rooms, shops, bathrooms, restaurant dining rooms, bars, car showrooms, cinemas, surgeries/clinics)

Intensive commercial. (common areas of shopping centres, hotel halls, canteens, fastfood restaurants, dance clubs, hospitals.)
With the exception of areas subject to heavy concentrated loads (e.g. trolleys with hard wheels)

EXTERIORS

Upon condition that surfaces are sheltered (e.g. loggias, covered balconies, etc.) and made totally impervious. We recommend the use of sizes that have sides not exceeding 120cm.



Posa a parete Wall installation

Situazioni applicative sia per interventi di nuova costruzione che di ristrutturazioni con posa in sovrapposizione a pavimenti preesistenti.

IN INTERNO

Qualunque ambiente residenziale e commerciale.

IN ESTERNO

Qualunque ambiente residenziale e commerciale.

For new buildings and refurbishing, for installation on pre-existing floors.

INTERIORS

Any residential and commercial environment.

EXTERIORS

Any residential and commercial environment.

Destinazioni speciali / Special uses



Facciate ventilate*
Ventilated facades



Rivestimenti termici a cappotto
External wall thermal insulation system



Rivestimenti vasche piscine
Bathtubs and swimming pool cladding



Superfici da rivestire nel settore dell'arredamento
For furniture surfaces













Destinazioni speciali/Special uses: in funzione delle specifiche del progetto, in abbinamento a sistemi costruttivi indicati da Panariagroup e approvati dalla Direzione Lavori/depending on project specifications and in combination with the construction systems recommended by Panariagroup and approved by the Installation Supervisor.

*Solo dopo l'applicazione della rete in fibra di vetro/only after the application of fiberglass mesh

Caratteristiche tecniche / Technical characteristics

Gres porcellanato laminato UGL
/Laminated porcelain stoneware UGL
SLIMTECH 6mm

Conforme/according to: ISO 13006 G (Gruppo/Group Bla)
EN 14411 G (Gruppo/Group Bla)
ANSI A137.3

	Metodo di prova /Test method	Requisiti prescritti /Required values	Valori medi /Average values
 Assorbimento d'acqua /Water absorption	ISO 10545-3 ASTM C373	≤ 0,5%	0,1%
 Resistenza a flessione /Modulus of rupture	ISO 10545-4 ASTM C1505	≥ 35 N/mm ² ≥ 6000 PSI	50 N/mm ² ≥ 6000 PSI
 Resistenza all'abrasione profonda /Resistance to deep abrasion	ISO 10545-6 ASTM C1243	≤ 175 mm ³	Conforme/conforms
 Dilatazione termica lineare /Linear thermal expansion	ISO 10545-8 ASTM C372	Requisito non previsto/No provision Requisito non previsto/No provision	$\alpha \leq 7 \times 10^{-6} \text{ } ^\circ\text{C}^{-1}$ $\alpha \leq 4.4 \times 10^{-6} \text{ } ^\circ\text{F}^{-1} / \alpha \leq 8 \times 10^{-6} \text{ } ^\circ\text{C}^{-1}$
 Resistenza alle macchie /Stain resistance	ISO 10545-14 ASTM C1378	Classe/Class 3 Min. Come indicato dal produttore /As indicated by manufacturer	5 Resistente/Resistant Class A Resistente/Resistant
 Resistenza all'attacco chimico* /Chemical resistance	ISO 10545-13 ASTM C650	Come indicato dal produttore /As indicated by manufacturer Come indicato dal produttore /As indicated by manufacturer	LA—HA Resistente/Resistant Class A Resistente/Resistant
 Resistenza al gelo /Frost resistance	ISO 10545-12 ASTM C1026	Nessuna alterazione/No alteration Come indicato dal produttore /As indicated by manufacturer	Resistente/Resistant Resistente/Resistant
 Resistenza allo scivolamento /Slip resistance	DIN 51130 BCR-TORTUS ANSI A326.3	— — —	R10 $\mu > 0,40$ DCOF ≥ 0.42
 Reazione al fuoco /Fire reaction	EN 13823 EN 9239-1	CPR (UE) 305/2011, 2000/147/CE, UNI EN 13501-1	A1 (wall) A1 _f (floor)
 Diffusione di fiamma /Flame spread	ASTM E84	Requisito non previsto/No provision	Classe/Class A
 Conducibilità termica /Thermal conductivity	EN 12524	—	$\lambda = 1,3 \text{ W/m}^2 \text{ K} / 0.7 \text{ BTU/ft h}^2 \text{ F}$
 Stonalizzazione /Shade variation	ANSI A137/3	Come indicato dal produttore /As indicated by manufacturer	V3 Variazioni moderate /Moderate variation

Fuga minima consigliata: vedi Manuale Tecnico Slimtech/minimum suggested joint: refer to Slimtech Technical Manual.

*Ad esclusione dell'acido fluoridrico e derivati/excluding hydrofluoric acid and its derivatives

Imballi / Packing

Articolo	Scatola			Pallet				
	cm	inch	pz	mq	kg	scat.	mq	kg
Fondo	120x260	48"x102"	1	3,12	44,0	20	62,40	880,0
Fondo	120x120	48"x48"	2	2,88	40,6	25	72,00	1015,0
Fondo	60x120	24"x48"	3	2,16	30,3	32	69,12	968,0
Decoro	120x260	48"x102"	1	3,12	44,0	20	62,40	880,0
Decoro	120x120	48"x48"	2	2,88	40,6	25	72,00	1015,0
Decoro	60x120	24"x48"	3	2,16	30,3	32	69,12	968,0

Certificazioni / Certifications



ISO 14001



ISO 9001



EN 14411
Marchio CE*



Leed**



Stabilimento di
Fiorano M. (MO)

Emas



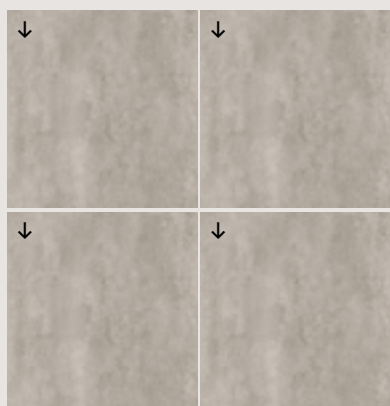
*MARCHIO CE Le DOP sono disponibili sul sito internet/DOP are available on the website www.ceramichelea.it
**LEED Lea Ceramiche, è membro di GBC Italia, organizzazione che promuove sul territorio italiano la realizzazione di edifici nel rispetto dell'ambiente, della salute e del benessere delle persone che ci vivino e lavorano./Lea Ceramiche is a member of the U.S. Green Building Council: this is an organization that promotes buildings that are environmentally responsible, profitable and healthy places to live and work.

Consigli per la posa / Suggestions for laying

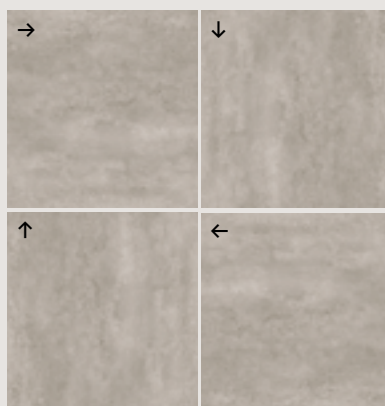
Per una maggiore variabilità grafica della superficie da rivestire, si consiglia di miscelare il prodotto in fase di posa. Le diverse e numerose facce del prodotto sono imballate secondo una logica randomizzata per garantire la massima variabilità in ogni collo./For a better graphic variation of the surface, we recommend to mix the product during installation. The diverse and numerous graphics of the product are randomly packaged to guarantee the best possible variation within each box.

Concreto riproduce cromie e texture cementizie leggermente direzionate. Per ottenere una resa grafica ottimale sulla superficie da rivestire nel formato 120x120, si sconsiglia la posa casuale e si raccomandano le seguenti: /Concreto recreates cement colours and textures which have a slight orientation. To obtain the best floor layout on a 120 cm x120 cm area, it is not recommended to lay the tiles randomly but to follow one of the two installation patterns below:

Posa direzionata/Aligned installation



Posa incrociata/Perpendicular installation



Colophon / Company info

LEA CERAMICHE
Via Cameazzo, 21
41042 Fiorano Modenese
Modena Italy

T +39 0536 837811
E info@ceramichelea.it
www.ceramichelea.com

Panariagroup
Industrie Ceramiche S.p.A.

MILANO
Showroom Lea Ceramiche
Via Durini, 3
20122 Milano
T +39 02 76011406
E showroom_milano@ceramichelea.it

PARIGI
Lab Lea Ceramiche
Rue Therese, 20 -
Rue des Moulins, 1
1^{ere} Arrondissement
(Métro Pyramides)
75001 Paris
T +33 648116844

USA
Lea North America, LLC
800 Clanton Road, Suite N
Charlotte, NC 28217
T +1 704 522 6300
E info@leausa.us
www.leausa.us

Coordination
Panariagroup –
Marketing &
Communications

Art direction
Choice-Studio with
Panariagroup –
Marketing &
Communications

Concept and design
Choice-Studio

Photo
MHP

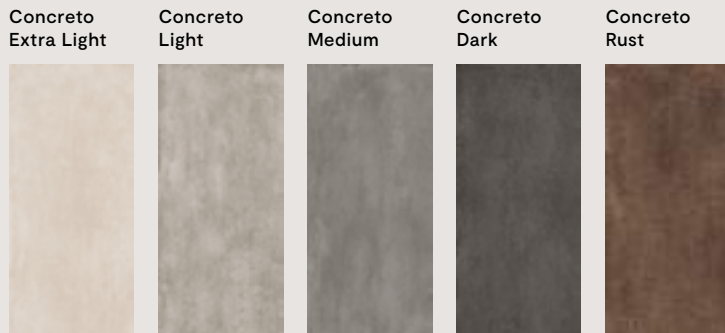
Styling
Cora Vohwinkel

Thanks to
Atipico
Federica Moretti –
Hat Designer
Flos
Kartell
Living Divani
MDF
Oluce
Venini
Zucchetti

Studio Fabio Novembre

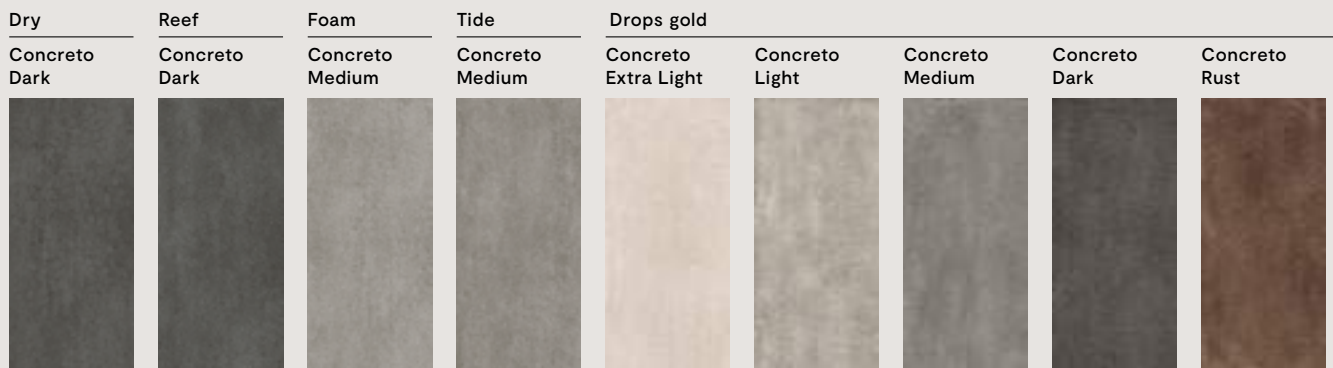
Concreto overview

Colori / Colors



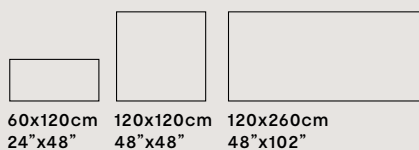
Varianti / Variations

Decori / Decors



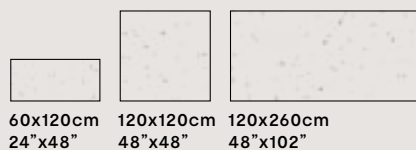
Formati / Sizes ^{LRT}

Fondi/Plain Tiles

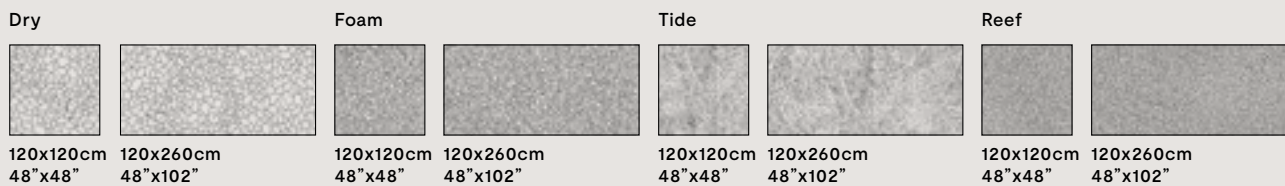


Decori/Decors

Drops Gold



Varianti/Variations



Materiale/material:
Gres porcellanato laminato
Laminated porcelain stoneware
Spessore/thickness: 6mm

www.ceramichelea.it

